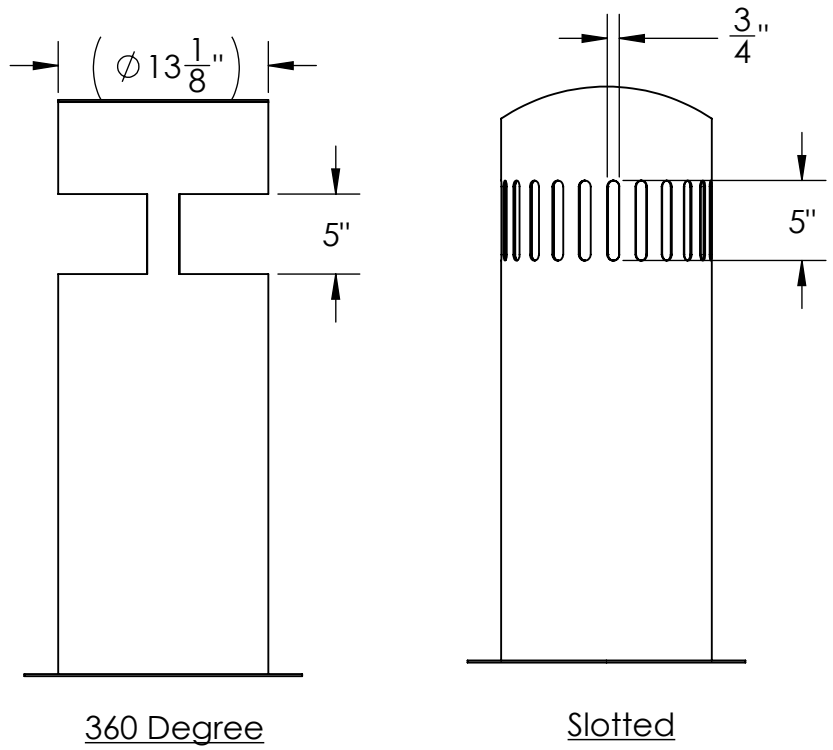
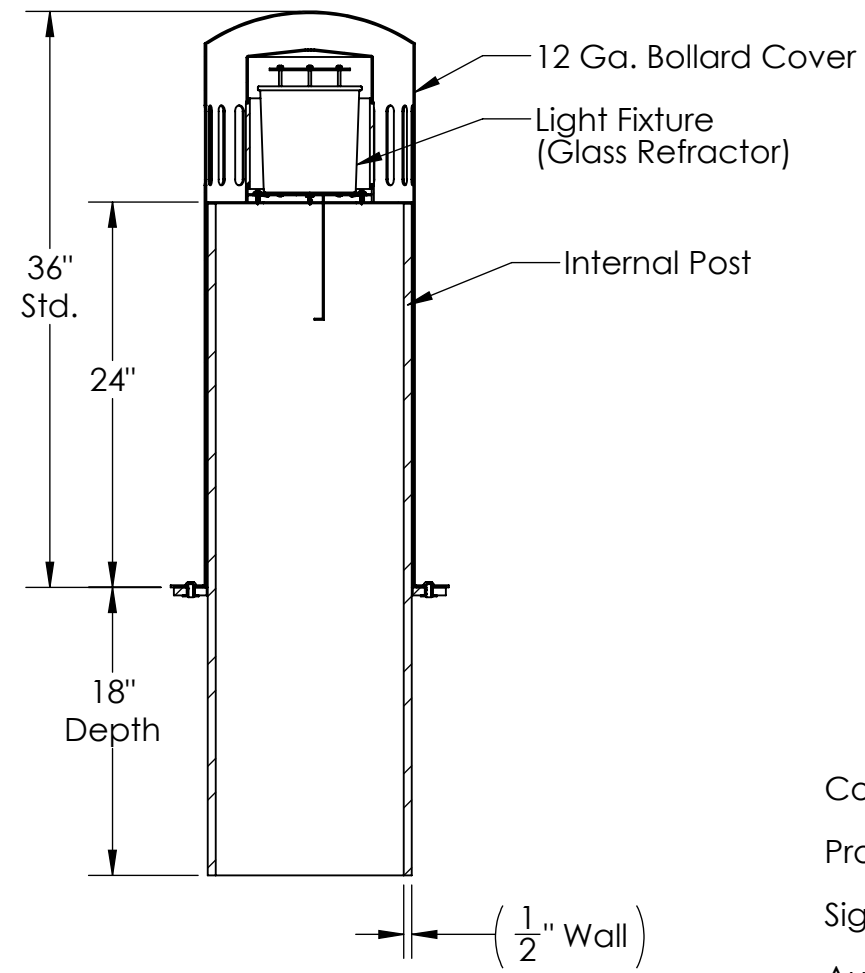
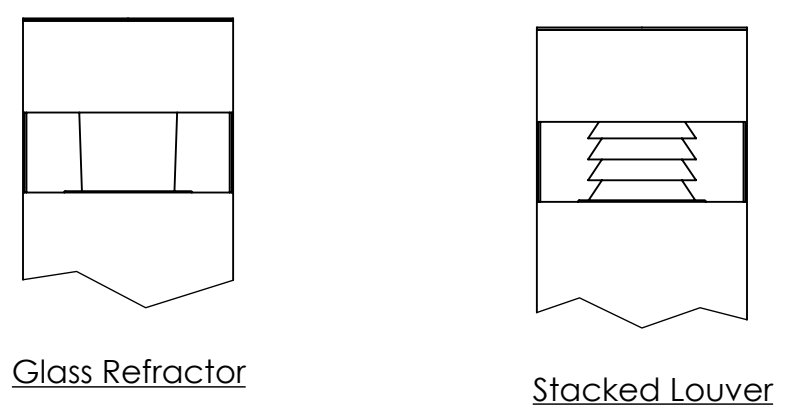


**Bollard Cover Option**



**Globe Style**



**SPECIFICATION:**

**Bollard Material (12" Nominal Pipe):**

**Internal Post Wall Thickness:**

- 1/2"  1"

**Bollard Cover Style:**

- 360 Degree  Slotted

**Stainless Steel Grade:**

- T304 Std.  T316

**Height:**  36" Std.  42"

**Bollard Cap Style:**

- Dome  Flat

**Globe Style:**

- Stacked Louver:
  - Metal Halide - 70w max (Transformer)
  - CFL - 42w max (Smart Tap)
  - Inductional Fluorscent - 15w max (120v only)
  - Led - 12w
    - Cool  Warm
- Glass Refractor:
  - Metal Halide - 100w max (Transformer)
  - CFL - 42w max (Smart Tap)
  - Inductional Fluorscent - 23w max (120v only)
  - Led - 12w
    - Cool  Warm

**Lense Style:**

- Clear  Opal

**Voltage**

- 120v  208v  240v  277v  Other \_\_\_\_\_

**Bollard Finish:**

- Powdercoat RAL # : \_\_\_\_\_
- #4 Brushed Finish (Horizontal)
- Other : \_\_\_\_\_

Company: \_\_\_\_\_

Project Name: \_\_\_\_\_

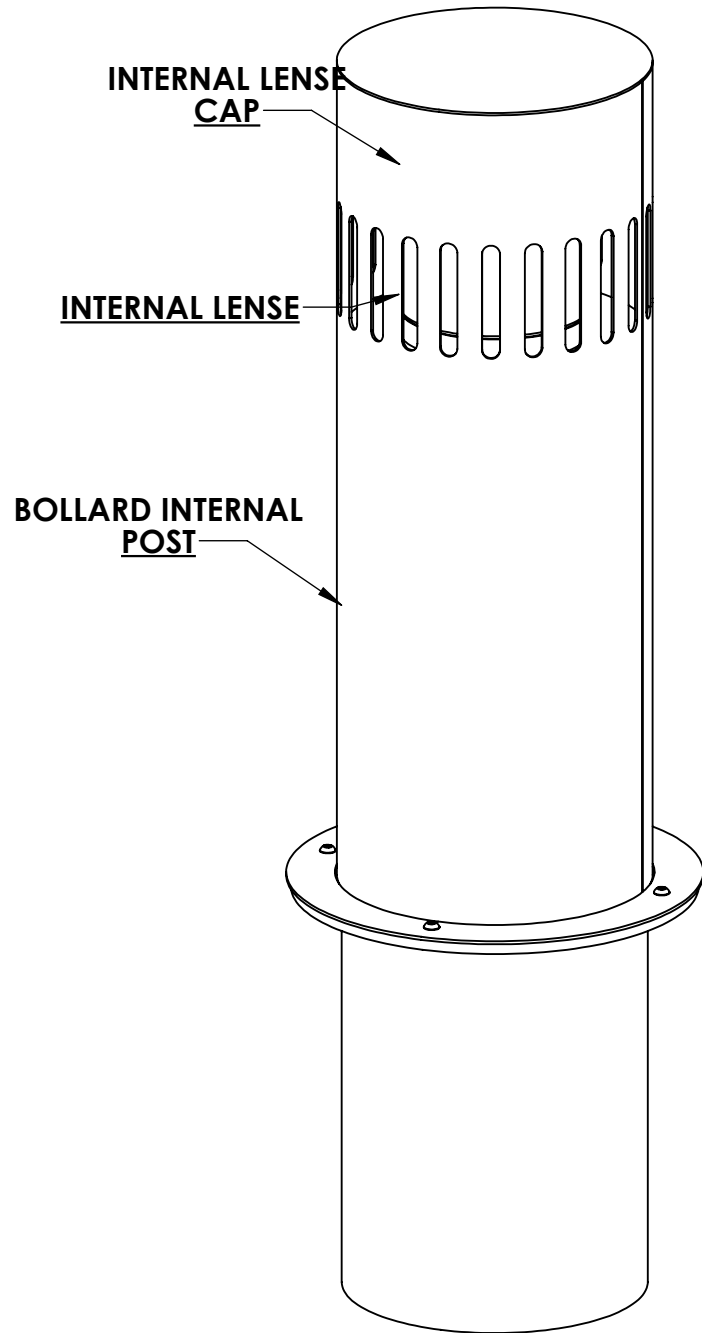
Signee's Name Written Clearly: \_\_\_\_\_ Date: \_\_\_\_\_

Authorized Signature: \_\_\_\_\_

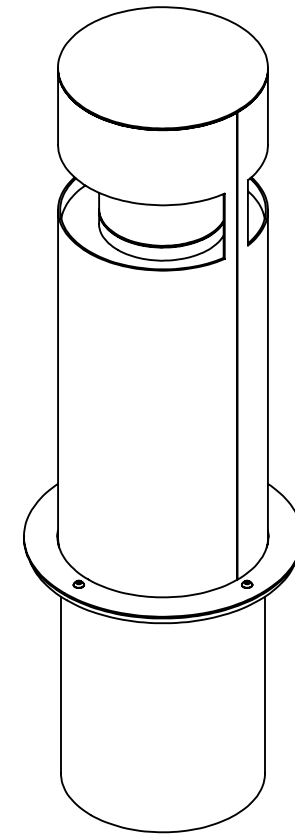
|                   |                      |                 |                |               |
|-------------------|----------------------|-----------------|----------------|---------------|
| <b>SIZE<br/>B</b> | <b>PRODUCED BY :</b> | <b>JMG</b>      | <b>REV :</b>   | <b>D</b>      |
|                   | <b>PRODUCED ON :</b> | <b>8/1/2013</b> | <b>SHEET :</b> | <b>1 OF 2</b> |

**MODEL SHOWN: SLS12XXX-36"-DO-SLOT**

D  
C  
B  
A



**BOLLARD SS COVER**



**(4) 3/8"-16 TAMPER PROOF MOUNTING SCREWS**

|                   |                      |                 |                |               |
|-------------------|----------------------|-----------------|----------------|---------------|
| <b>SIZE<br/>B</b> | <b>PRODUCED BY :</b> | <b>JMG</b>      | <b>REV :</b>   | <b>C</b>      |
|                   | <b>PRODUCED ON :</b> | <b>8/1/2013</b> | <b>SHEET :</b> | <b>2 OF 3</b> |

**CALPIPE INDUSTRIES**  
Incorporated

19440 S. Dominguez Hills Dr.  
Rancho Dominguez, Ca. 90220

[www.CalPipeBollards.com](http://www.CalPipeBollards.com)  
562.803.4388 Direct  
562.803.9885 Fax

**PROPRIETARY AND CONFIDENTIAL**  
THE INFORMATION CONTAINED IN THIS DRAWING IS THE SOLE PROPERTY OF CALPIPE INDUSTRIES INC. ANY REPRODUCTION IN PART OR AS A WHOLE WITHOUT THE WRITTEN PERMISSION OF CALPIPE INDUSTRIES INC. IS PROHIBITED

**UNLESS OTHERWISE SPECIFIED:**  
DIMENSIONS ARE IN INCHES  
TOLERANCES:  
FRACTIONAL ± 1/4  
ANGULAR: MACH ± 1 BEND ± 1  
TWO PLACE DECIMAL THREE ± .010  
PLACE DECIMAL ± .005

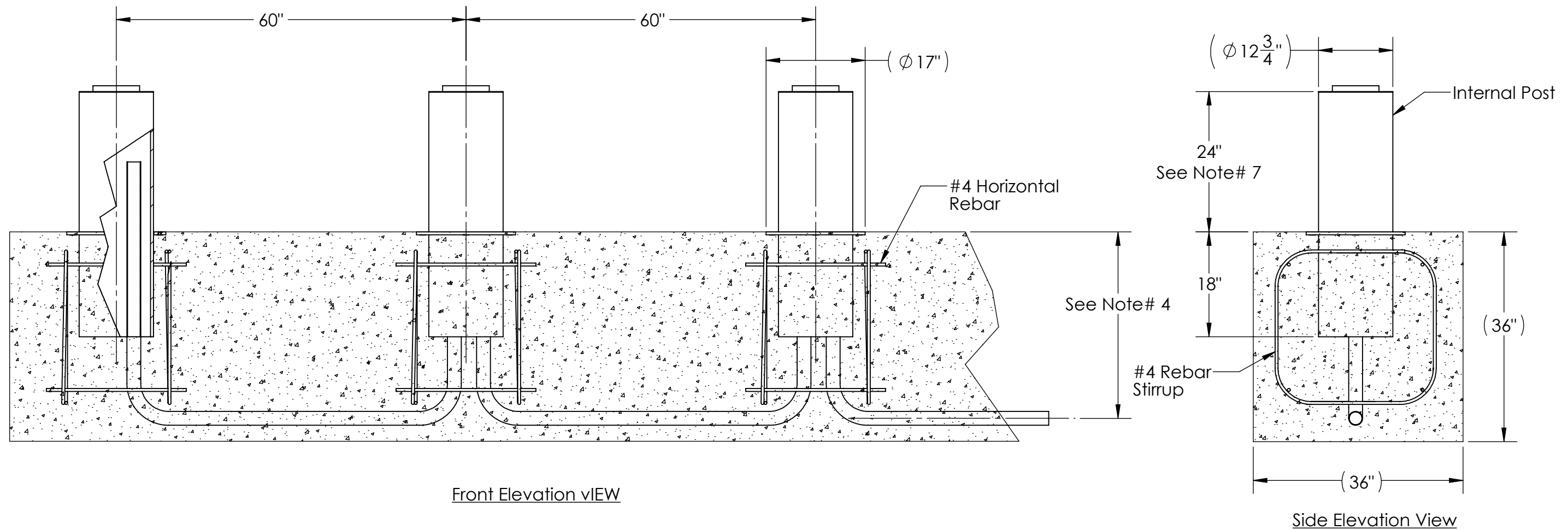
**SLS12XXX**  
**12" Security Lighted Bollard**

8 7 6 5 4 3 2 1

**General Notes**

- 1.) Prior to install water table and soil conditions should be varified.
- 2.) The footing shown is a recommended footing, engineered by others. Footing dimensinos will vary according to location and installation specifications.
- 3.) Bollard spacing should be ADA compliant.
- 4.) Electrical conduit depth will vary according to local electrical code. It is the responsibilty of the General Contractor to install electrical conduit according to local codes.
- 5.) To prevent moisture from entering the light assembly, it is recommended to fill post with concrete.
- 6.) Concrete: 3500 Psi Minimum
- 7.) Depending on height option selected on sheet #1, internal post height will vary. Refer to Internal Post Height Table .

| Internal Post Height |                           |
|----------------------|---------------------------|
| Cover Height         | Internal Post Above Grade |
| 36"                  | 24"                       |
| 42"                  | 30"                       |



|                   |                      |                 |                |               |
|-------------------|----------------------|-----------------|----------------|---------------|
| <b>SIZE<br/>B</b> | <b>PRODUCED BY :</b> | <b>JMG</b>      | <b>REV :</b>   |               |
|                   | <b>PRODUCED ON :</b> | <b>8/9/2013</b> | <b>SHEET :</b> | <b>3 OF 3</b> |